



**LYNFIELD  
COLLEGE**

# NEWSLINK

NEWSLETTER 7 | 15 MAY 2026

## *From Tumuaki Richard Winn*

*Ehara taku toa i te toa takitahi, engari he toa takitini*

**Success is not the work of an individual, but the work of many**

### **Kia ora koutou**

It has been a very busy and rewarding last couple of weeks, with a wide range of opportunities available to students here at the College. Across academics, careers and sport, it has been wonderful to see so many of our students engaging positively and representing the school with pride.

This week is Support Staff Week. We are fortunate to have such an amazing support staff team, whose dedication and hard work make a significant difference to our students and to the smooth day-to-day running of the school. Our support staff are often the first people to greet students and whānau each day, providing care, guidance, reassurance, and practical support in countless ways. Whether working in administration, learning support, guidance, library services, property, ICT, finance, attendance, teacher aide support, or behind the scenes in many other roles, they help create the welcoming, inclusive, and supportive environment that makes our school community so special.

Their commitment, patience, professionalism, and **Manaakitanga** are deeply appreciated. Thank you for the important work you do every day to support our students, staff, and wider school community.

We have also had a number of exciting career-related opportunities recently, many of which are highlighted throughout the following pages. In particular, we feature the story of ex-student Rachel Walton, whose journey in the armed forces provided inspiration for a number of students, and is this issue's Alumni feature.

We are continuing to grow and strengthen our alumni network. If you are a Lynfield College alumnus, or know someone who is, we encourage you to register using the following form: [Lynfield College Alumni Registration Form](#)

Yesterday, I had the privilege of attending the annual exchange with Mount Maunganui College, who were this year's hosts. While the results may not have gone our way overall, our students demonstrated our value of **Wairua kaha** throughout the day — showing resilience and perseverance in the way they represented our school. From the very early departure from school to the late return home, students conducted themselves with maturity and enthusiasm. They supported one another and reflected our school values both on and off the field.

This exchange, which began in the 1960s, is a longstanding tradition that continues to strengthen connections, foster healthy competition, and create lasting memories and friendships for generations of students. Thank you to the staff, coaches, managers, and whānau who supported the trip, and congratulations to all students involved for the way you represented our kura.

## **IN THIS ISSUE**

- *Message from Tumuaki Richard Winn*
- *Alumni News*
- *International Student Alumni*
- *Careers OutWest*
- *LC Girls Tap into Careers*
- *Riding e-Scooters & Bikes*
- *World Vision Inspiration*
- *3OED Karangahake Camp*
- *Hip Hop Dance Workshops*
- *Auckland Regional Chess*
- *Staff Graduations*
- *LitNum Exam Dates*
- *Week 3 Engagement Reports – Student Success*
- *Attendance – School Ball*
- *A message from our Nurses*
- *LC Production - Popstars*
- *SchoolTV – see our website*
- *Sport Scene*

## **COMING EVENTS**

**Monday 18 May**  
**German Language Week**  
**Wed 20 – Fri 22 May**  
**LITNUM Reading & Writing**  
**Mon 25 – Wed 27 May**  
**LITNUM Numeracy**  
**Monday 1 June**  
**KING'S BIRTHDAY HOLIDAY**  
**Samoan Language Week**  
**Thursday 28 May**  
**ROAD RACE**  
**Tuesday 16 June**  
**CULTURAL & LEADERSHIP**  
**PHOTOS**  
**Wed 24 – Sat 27 June**  
**LC Production: Popstars**  
**Tuesday 30 June**  
**WINTER SPORTS PHOTOS**  
**Friday 3 July**  
**Term 2 ends**

Kia pai tō rā whakatā (Have a great weekend)

Nga mihi nui

Richard Winn

**Tumuaki | Acting Principal**

## *Alumni News*

### **RACHEL WALTON (CLASS OF 2010)**

Lynfield College recently welcomed back former student Rachel Walton, who returned to school this week to speak with interested senior students about career opportunities in the New Zealand Defence Force. Rachel shared insights into her pathway and what life is like working in the military.

After graduating from Lynfield College in 2010, Rachel studied at Auckland University of Technology, completing a Bachelor of Health Science in 2014. After some time travelling, she joined the Royal New Zealand Navy in 2016.

Rachel says the decision was influenced both by her studies and her family background. Coming from a military family, with her father, uncles, and both grandfathers having served, the Navy felt like a natural fit. She was drawn to the opportunity to use her health science skills while also travelling and experiencing adventure. Originally, Rachel thought she might serve for a few years before moving on to something else. However, nearly a decade later she is still loving life in the Navy.

Now based in Devonport, Rachel manages a team of around 15 junior sailors. Her role is varied and can include training, administrative work, supporting medical teams on ships, and working with patients. One constant is daily physical training, which helps maintain fitness and build strong team morale.

Rachel says the best part of Navy life is the people. “You really feel like you have two families — the one you’re born into and the one you find in the Navy. When you live and work together for long periods, you build strong bonds and learn to rely on each other.”

Looking ahead, Rachel is preparing to return to a ship early next year and may take part in an overseas deployment lasting up to eight months. While being away from home can be challenging, she values the opportunity to travel and experience different cultures while working alongside navies from other countries.

Reflecting on her time at Lynfield College, Rachel says some of her favourite memories were simply seeing her friends every day and getting involved in the many opportunities school life offered. She played and coached netball and tennis and was also part of the school production from Year 10 through to Year 13, which allowed her to meet students from different year groups.

Rachel particularly enjoyed studying science, taking both Biology and Chemistry through to Year 13, subjects that helped shape her future career path. She also remembers enjoying History classes with Ms Mackey and Maths with Mr Paine, both of whom made a lasting impression during her time at school.

Rachel still keeps in touch with some of her Lynfield College friends and says it’s always special to reconnect. We thank Rachel for her time and wish her all the best for her career and deployment next year.



[Lynfield College Alumni Registration Form](#)



---

## Catching up with a former International Student

During a recent trip to China, Judy Fang had the pleasure of catching up with one of our former international students, Richard Wang – a wonderful reminder of the lasting connections formed through the Lynfield College experience.

Richard studied at Lynfield College from 2009 to 2013 and quickly developed a passion for Hospitality, achieving excellent results during his time here. After completing school, he continued his studies at NZMA, graduating with a New Zealand Diploma in Hospitality Management (Level 5).

His dedication to Western cuisine and commitment to refining his culinary skills have led to impressive success, including recognition in several competitions. Most recently, in January this year, he was awarded *Outstanding Chef* in the Western kitchen category.

Richard is now working as a Chef de Partie at Le Méridien Shanghai Minhang, a five-star luxury hotel within the Marriott group, an exciting milestone in his professional journey.

During his time at Lynfield College, Richard was part of Judy's family (homestay), and the close relationship they formed during those years has continued well beyond his time in New Zealand. Their recent reunion highlights the lifelong friendships that can grow from the international student experience.



---

## Year 12 Students Explore Future Pathways at Careers OutWest Expo

Last Wednesday, our entire Y12 cohort headed out to the Careers OutWest Expo held at The Trusts Arena in Henderson.

The expo brought together around 70 employers, tertiary institutions, and training providers, all eager to share their knowledge and showcase the many career possibilities available to young people. It was a valuable opportunity for students to speak directly with industry professionals, ask questions, and gain insight into a wide range of study and career options.

During the expo, our students were able to experience a variety of interactive activities, including virtual reality demonstrations, testing their strength in physical challenges, trying their hand at hammering nails in a trade skills activity, and even stepping into the role of a radio host for a moment. One lucky Lynfield student even walked away with a brand-new set of headphones after winning a prize at one of the stalls.

Our students thoroughly enjoyed exploring the wide variety of industries represented at the expo, and we hope the experience helped many begin thinking more confidently about their future plans and the steps they may take in the future.





## *Lynfield Girls Tap into Careers in Water Infrastructure*

Lynfield College students recently had the opportunity to explore an exciting and often overlooked career pathway when they attended the Tap In – Explore Careers in Water Infrastructure day in Māngere.

Hosted in partnership with Pipeline and Civil, the half-day event took place at their training centre and was designed to introduce young women to careers in water and infrastructure. The programme focused on hands-on roles that offer strong career opportunities without necessarily requiring many formal qualifications to get started.

Representing Lynfield College were Temperance Gataulu-Mara, Tehillah Hubert, Chante Luiters, Ana Lusaipau, Madison Markovina, Jolie Moss-Cocker, and Milla Wild. Throughout the morning, the students took part in a range of practical activities that gave them a real taste of the industry. One of the highlights was the chance to operate heavy machinery – including driving diggers – under expert guidance.

Alongside the practical experiences, students also heard from industry professionals who shared their own career journeys in water and civil infrastructure. These talks highlighted the many pathways available and how young people can build successful and meaningful careers in this important sector.

The event organisers were full of our girls, sharing their appreciation afterwards: *“We loved having them – what a great bunch of students you have!”*

It was an inspiring day of learning, confidence-building, and discovering new possibilities with the potential of further opportunities to come.



---

## ***Riding e-Scooters and e-Bikes***

A reminder to students riding e-scooters or e-bikes, to please be considerate of pedestrians using the footpaths and to obey the road rules as set out by the NZ Transport Agency. Information regarding bike and e-scooters can be found on the NZ Transport Agency website. Students must not ride e-scooters or bikes inside the College grounds.

---

## ***Lynfield Students Inspired at World Vision Youth Conference***

Last Tuesday, a group of Lynfield College student leaders attended the World Vision Youth Conference, held at The Trusts Arena. Accompanied by Mr Christie, the group included the Year 12 Executive along with Ambassador Coordinators Vyom Barot and Arsh Narayan.

The annual conference brings together students from Years 11–13 from across Aotearoa and is designed to inspire young people to become passionate advocates for justice and positive change. Each year, nearly two thousand students take part in the national tour organised by World Vision New Zealand, equipping them with leadership skills and a deeper understanding of global and local issues.

Throughout the day, students explored how they can create meaningful change within their schools and communities. They also learned more about the systemic injustices facing societies today, heard from inspiring guest speakers such as Mike McRoberts, and took part in interactive workshops.

Inspired by the experience, the Lynfield student leaders are now turning their focus to organising the school's involvement in the World Vision 40 Hour Challenge in June. Lynfield College has proudly supported World Vision for more than 40 years, raising awareness and funds to support vulnerable communities around the world. We wish them all the best for their planning.



---

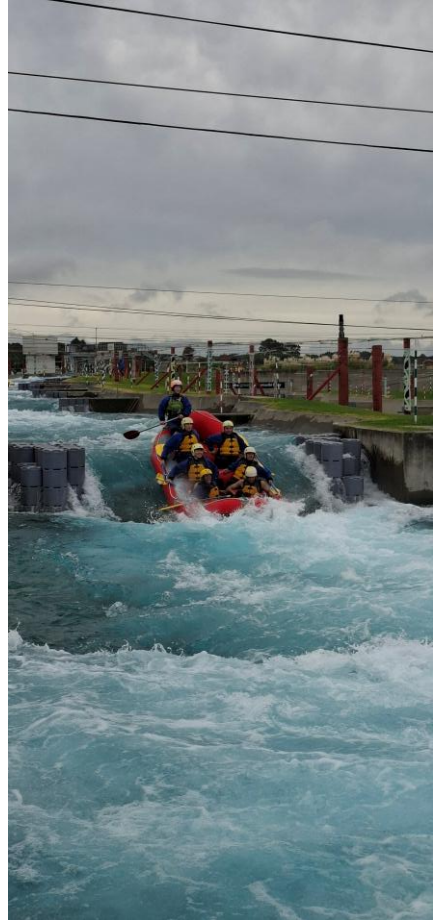
## ***30ED Karangahake Gorge Camp***

Recently, the two Year 13 Level 3 Outdoor Education classes went on a 3-day camp to Dickie Flat Campsite. The camp gave students the opportunity to challenge themselves, build teamwork skills, and experience the outdoors in a completely new way.

On the camp, students learned about river safety and practised using throw bags for water rescues. Students were taught how to safely respond in emergency situations and how important communication and teamwork are when working around water. All students had the opportunity to construct bivys using natural materials and equipment they had brought with them. After building their shelters, they prepared to spend the night in the bush, which was a completely new experience for many students.

The second day focused on teamwork and problem solving activities around the campsite. Students worked in groups and took part in a range of challenges, including getting group members over a wall, removing a tyre from the top of a pole, and building a bridge using limited resources. These activities encouraged students to communicate clearly, trust one another, and think creatively under pressure.

On the return to Lynfield we stopped in at Wero White Water park for some rafting and to experience the power of moving water. It was a great camp with lots of learning.



## Hip Hop Dance Workshops

The Senior Dance class was treated to another outside tutor earlier this term. They had six hours of intense Hip Hop genre training from tutor Caitlin Cilliers from The Collective. In the workshops they learnt a high energy routine to the song 'Get Up' from the film 'Step Up'. We look forward to the students performing this number as one of our repertoire pieces for the Dance Showcase in Term 4.



## Auckland Regional Senior Chess Tournament

Ten Lynfield students across all year levels participated in the Auckland Regional Chess Tournament on Friday 8<sup>th</sup> May at Mt Albert Grammar school. They placed third in the tournament, qualifying Lynfield College to complete in the national finals, which will take place in October.

Congratulations to all team members:

Mahant Agarwal, Amy Hawke, Keith Huang, Gia Bao Le, Alan Li, Hetansh Trivedi, Izak Van Niekerk, Ayaan Vasudeva, Ian Zhang and Liam Zhang.

Our top scorers were Ayaan Vasudeva with 5 points out of 7 and Amy Hawke with 4.5 points out of 7. Both of them received a special award for their performance.



---

## Staff Graduation Celebrations

Congratulations to our teaching staff who have celebrated a recent graduation:

**Rahul Chopra** HOD Commerce – Master of Education

**Aleisha Wallabh-Smith** Pre-service Teacher – Master of Arts in German

**Elizabeth Alipia** Whānau Connector – Bachelor of Social Work (Honours)

**Michael Botur** English Teacher – Graduate Diploma in Teaching (Secondary)



## Dates for LITNUM in May

Wednesday 20 <sup>th</sup> May	Year 12 and 13 Reading and Writing A- L	Period 3 & 4
Thursday 21 <sup>st</sup> May	Year 12 and 13 Reading and Writing M-Z	Period 3 & 4
Friday 22 <sup>nd</sup> May	Back up day	Period 1 & 2
Monday 25 <sup>th</sup> May	Year 12 and 13 Numeracy	Period 3 & 4
Tuesday 26 <sup>th</sup> May	Year 11 Numeracy	Period 1 & 2
Wednesday 27 <sup>th</sup> May	Back up day	Period 3 & 4

Students can work through the following Literacy Google slides at home in preparation for these exams. They contain links to past exams, exemplars and some tips. [Literacy Google Slides](#)

## Week 3 Engagement Reports – Celebrating Student Success

We are thrilled to report that just over 41% of our students earned perfect or near-perfect grades on their latest engagement reports (Green). This reflects they have a strong commitment to their learning.

A breakdown across all year groups:

Year 9 – 39%

Year 10 – 32%

Year 11 – 46%

Year 12 – 50%

Year 13 – 39%

(Overall – 41%)

### How We Assess Engagement

Teachers evaluate student engagement using the descriptors below:

Cause for Concern	Room to Improve	Satisfactory	Very Good
<ul style="list-style-type: none"> <li>Seldom prepared for learning</li> <li>Seldom conducts themselves in a manner that is appropriate to the learning environment</li> <li>Seldom arrives with the correct gear, stationery or dressed correctly for learning activities</li> <li>Seldom prioritises learning activities</li> <li>Seldom punctual to class</li> </ul>	<ul style="list-style-type: none"> <li>Sometimes prepared for learning</li> <li>Sometimes conducts themselves in a manner that is appropriate to the learning environment</li> <li>Sometimes arrives with the correct gear, stationery or dressed correctly for learning activities</li> <li>Sometimes prioritises learning activities</li> <li>Sometimes punctual to class</li> </ul>	<ul style="list-style-type: none"> <li>Regularly prepared for learning</li> <li>Regularly conducts themselves in a manner that is appropriate to the learning environment</li> <li>Regularly arrives with the correct gear, stationery or dressed correctly for learning activities</li> <li>Regularly prioritises learning activities</li> <li>Regularly punctual to class</li> </ul>	<ul style="list-style-type: none"> <li>Consistently prepared for learning</li> <li>Consistently conducts themselves in a manner that is appropriate to the learning environment</li> <li>Consistently arrives with the correct gear, stationery or dressed correctly for learning activities</li> <li>Consistently prioritises learning activities</li> <li>Consistently punctual to class</li> </ul>

### How You Can Help at Home

As a parent, you play a vital role in supporting your child's success. Each day, please:

- Confirm they have all necessary equipment, including a working Chromebook
- Check they're wearing the correct uniform
- Encourage them to arrive to school and class on time so they do not miss key instructions
- Ask about upcoming homework and assessment deadlines

When students come to school prepared and organised, they are set up to engage fully with their learning. Thank you for your partnership in supporting our students' achievement.

---

## Attendance

Last term our 'regular attendance' (students present over 90% of the time) was 69%, and we set ourselves a goal of 67% for Term 2. So far this term, 70% of our students have been present 'regularly', exceeding our target. Additionally, students on the borderline of 80-90% 'irregular' attendance has decreased from 21% to 14%, showing that students are making an increased effort to be present.

Caregivers receive an email each Monday morning with a summary of their student's attendance for the previous week, and their stats so far this term and year. There is lots of evidence from a range of studies that increased attendance leads to higher academic achievement in NCEA.

Please support your student to continue their good attendance efforts, and contact the school by emailing [absence@lynfield.school.nz](mailto:absence@lynfield.school.nz), or through the SchoolBridge app (Download at <https://www.inboxdesign.co.nz/app>) to explain any absences as we approach the time of year with lots of sickness.

OUR TARGET:  
**90%+**  
ATTENDANCE

LYNFIELD COLLEGE  
LEARN TO LIVE

WHY IT MATTERS

- BETTER LEARNING**  
More time in school means more progress.
- ACHIEVE MORE**  
Good attendance builds skills for success.
- STAY CONNECTED**  
Be part of the learning.  
Be part of the team.
- BUILD GOOD HABITS**  
Great attendance today leads to a stronger future.

EVERY DAY COUNTS. EVERY MINUTE MATTERS.

BE HERE + ON TIME = 90%+ ATTENDANCE

Aim High.  
Be Here.  
Succeed!

TOGETHER, LET'S HIT OUR TARGET OF 90%+ ATTENDANCE!

---

## Lynfield College School Ball 2026

The Ball is an extra-curriculum event, provided by the College to those Year 12 and Year 13 students who meet the criteria to attend. **Attendance at the Ball is a privilege not a right.** Students should be aware that ticket purchase (Term 2) is conditional on the following:

- Meeting all outstanding obligations to the College
- Having no more than 5% unjustified absences
- Meeting our Code of Conduct
- Having no stand-downs or suspensions in the current year
- Having paid fees owing to the College
- Having presented signed and completed permission forms

Please Note: An application for reconsideration of any of the above conditions may be made to the Principal at the time of ball ticket sales

---

## SCHOOL TV

### Are you finding parenting your teen a challenge?

Adolescence is a rollercoaster for both the young person and their whanau. It can leave parents feeling out of their depth and wondering who this strange person is who used to be their kind caring child. We have on our website a portal into an amazing, well researched space where you can find some answers to your questions and discover that adolescence is a process that all young people bumble through.

To access our SchoolTV, please use the following link <https://lynfield.nz.schooltv.me/>

As young people come up against challenges whether it is sleeplessness, gaming, drugs and alcohol, studying for exams or any of the weird and wonderful things that cause them to stumble, you will be able to arm yourself with information and ideas on how to support them and yourselves through.



---

## A message from our School Nurses

We are noticing in the school health centre, there are a lot of respiratory and other infectious illnesses circulating around our school at the moment.

Please ensure your child stays at home if they are unwell.

Please refer to the link below for guidelines to help determine when a child should stay home from school.

<https://www.healthnz.govt.nz/health-topics/keeping-healthy/healthy-homes-environments/going-to-school/knowning-if-your-child-is-well-enough-to-go-to-school-guidance-for-parents>

There are simple things you and your whānau can do to stop the spread of infectious diseases and illnesses at home and school.

- Stay at home if you are sick
- Immunise against infectious diseases
- Keep your hands clean
- Wear a face mask
- Cover coughs and sneezes
- Keep household surfaces clean

For more information see: <https://www.healthnz.govt.nz/health-topics/keeping-healthy/healthy-homes-environments/healthy-habits>

As always, if you wish to share or update the health team on information regarding a student's health and wellbeing needs, do not hesitate to contact Nurses Jen Van Niekerk and Francie Duncan by emailing [nurse@lynfield.school.nz](mailto:nurse@lynfield.school.nz).

---

## Lynfield College Production - Popstars

Ticket link:

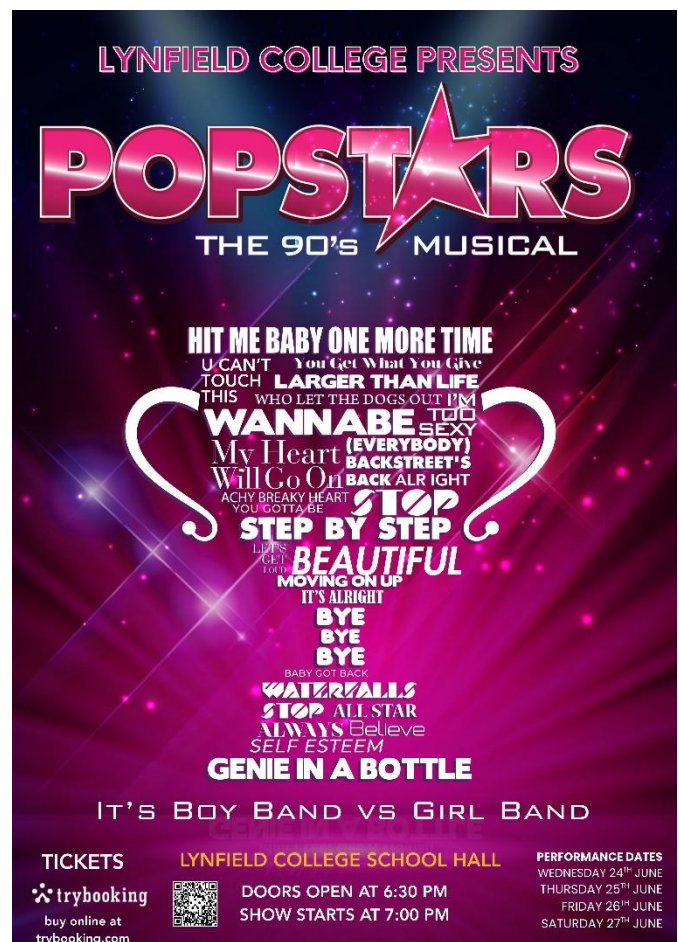
<https://www.trybooking.com/nz/events/landing/19794>

✦ Lynfield College Presents: A Throwback You Didn't Know You Needed ✦

It's boyband vs girlband in this high-energy, feel-good musical from the creators of Back to the 80s, serving drama, nostalgia, and iconic pop moments. Get ready for a full 90s pop revival, packed with smash hits from \*Spice Girls, Backstreet Boys, NSYNC, Britney Spears, Christina Aguilera, MC Hammer and more. It's bold, it's colourful, and it's giving pure throwback energy.

Set in a 1990s high school, Mark is on top of the world — until his superstar girlfriend, Queen Bee Shannon Van de Witt, drops him the second a shot at fame comes along. From hero to zero overnight... yeah, it's rough. But Mark and his garage band aren't going down without a fight. In a last-ditch attempt to win back the spotlight, they transform into a full-blown boyband, taking on Shannon's fierce Candy Girls at the State Talent Show. Enter Ella — the talented new girl who might just be the secret weapon they need. As the competition heats up, so do the stakes... and maybe something more. With rivalries, romance, and a Grand Final showdown looming, it all builds to one unforgettable night. Will Mark win the girl, win the prize, and win back his place on top? There's only one way to find out.

**Dates: Wednesday 24 - Saturday 27 June 2026**



---

## *Sports Scene*

### **MT MAUNGANUI COLLEGE SPORTS EXCHANGE**

Early yesterday morning, a group of 105 Lynfield College Sports students and staff made the trip down to Mt Maunganui College for our annual Sports Exchange. This is a tradition which has been going back to the 1960s. It was a great experience for all the students to be involved in this exchange again, which was unfortunately postponed in 2025. Although the results didn't quite go the way we would have hoped, the day still made for some great memories and was an awesome celebration of the friendship between our schools.

### **HOUSE COMPETITIONS**

Junior and Senior House Volleyball will be starting shortly. Seniors are set to begin in Week 6 and Juniors in Week 7. This competition will be held in the lower gym over lunch times throughout the week and always turns out to be one of the best events of the year so make sure you are involved! Please speak to your House Captains for signups.

### **AKSS SQUASH INDIVIDUAL CHAMPIONSHIPS**

We had a group of 5 students competing at this event with 64 total athletes, from 5-7 May at North Shore Squash Club. We had some amazing results which we are very proud of, listed below:

Aditya Parab 4th in Division 2 (19<sup>th</sup> overall)

Mira Ammathi 5th in Division 3 (18<sup>th</sup> overall)

Michael Small 3rd In Division 5 (24<sup>th</sup> overall)

Reed McLean 5th in Division 5 (39<sup>th</sup> overall)

Neelansh Malik 3rd in Division 7 (51<sup>st</sup> overall)

Congratulations to you all on your performances!

[Lynfield College Weekly Sports Draw](#)

Whau Raise Up Crew Presents

**FREE**

**BADMINTON**

**EVERY FRIDAY | 4-6PM**

**Ages 13-18** Bring your friends!

New Lynn Community Centre  
45 Totara Avenue, New Lynn

raiseup.co.nz

Whau Local Board

the Y

**Raise Up**  
THE Y YOUTH DEVELOPMENT

# PUBLIC MEETING

## The Future of AI: Opportunities and Challenges How do we adapt?

Join Guest Speakers along with Dr Carlos Cheung

- **Dr Geri Harris**  
Programme Director – Business Undergraduate AUT
- **Lewis Mills**  
Director Corporate Affairs – Microsoft in New Zealand
- **Dr Debbie Lomax**  
NZ Tertiary College Programme Lead – Schools
- **Youth Panel**  
Lynfield College and Mt Roskill Grammar

**Monday 25 May, 6:30pm – 8:30pm**

Lynfield Youth and Leisure Centre  
6-18 Griffen Park Road, Mount Roskill



Authorised by C Cheung, Parliament Buildings, Wgtn.

# ALLWEST

PLUMBING & DRAINAGE

★ Special rates for school families ★



- Plumbing & Drainage
  - Hydro Jetting
  - New Installations and Maintenance
  - Drain Unblocking
  - CCTV & Recordings
  - Vacuum Truck - Cesspit, Grease Trap and Septic Tank Cleaning
- + More

We are ready to help. Call us now

09 818 9399 | 027 4133 087

office@allwestplumbing.co.nz

www.allwestplumbing.co.nz

